



# INSEEC GRAND ÉCOLE

## OMNES EDUCATION LONDON SCHOOL



- As a leader in private higher education, OMNES Education is the only group to offer a range of lifelong learning programs that cover the main areas of higher education and research:
  - Management, Engineering, Political Science and International Relations, Communication and Advertising.
- Learn more about this institution [here](#).

# INSEEC GRAND ÉCOLE

@ London, UK

## “DATA INNOVATION & BEYOND”

- Program dates: April 29, 2024 – May 3, 2024
- Price per person: 1.800€
- Included in the price:
  - ✓ Training and delivery of the program
  - ✓ Company visits
  - ✓ All course materials
  - ✓ Hardcopy Certificate of Completion from FIU College of Business
- Campus location: Marylebone Village – heart of London
- Program delivered in **English**



The theme of the program is “Data Innovation” and is centered around a deeper understanding of business within the data innovation perspective. The one-week program includes conferences, workshops and masterclasses, combined with company visits & guest speakers.

Students who participate in this one-week immersive program, will:

- Understand AI within the business world
- Learn about Open Innovation and how to practice it
- Dive into the latest solutions
- Participate in creative workshops, putting all the knowledge into practice

Students who complete the program will be given a certificate of completion.



Indicative.  
Subject to change.

APRIL 29, 2024 - MAY 3, 2024					
UK TIMES	MONDAY	TUESDAY	WEDNESDAY	THURSDAY	FRIDAY
9:30 - 11:45	WELCOME AND FIRST DAY ON CAMPUS (activities TBC)	London Campus: VR & Immersive Technology WS	London Campus: AI & Ethics WS	London Campus: Smart cities WS	Activity TBC
12:00 - 12:50			Keynote speaker: Homefans	Keynote speaker: Qualcomm	
13:00 - 13:50		LUNCH	LUNCH	LUNCH	FREE TIME
14:00 - Between 16:00h and 18:00h		Company visit in Shoreditch: London Tech Cuty 4.0: Edenbase, Techstars, Vice, EMAP, Coccon Global, Talkmind	Company Visit in West End: Soho House, BBC, BBH, Lionsgate, M&C, Saatch, Telefonica	Company Visit in Olympic Village: Plexal, Here East, BT Sport	
	FREE	FREE	FREE	FREE	

*.Subject to change & availability*

Company Visits	Company visits may vary depending on the number of students allowed on site and on the availability of the companies. Alternatives to company visits are a representative meeting the students in our London Campus
Free time	
Lunch	Students can eat around campus at restaurants, cafes or supermarkets. There are also some lounges on campus where students can eat their own food using microwaves and coffee machine.
Keynote speakers	They come to INSEEC's facilities

# CORPORATE WORLD



PLEASE USE AS REFERENCE. SUBJECT TO CHANGE AND AVAILABILITY

Some of the companies  
visited in past editions



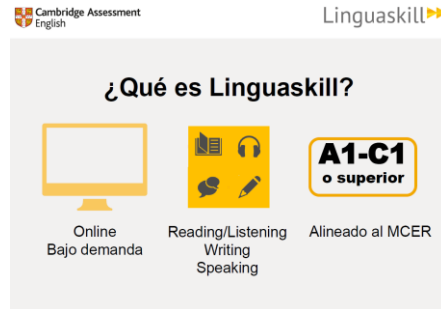
ELIGIBILITY TO ATTEND ILCs

# REQUIREMENTS TO BE ELIGIBLE TO ATTEND THE BST

- ✓ Be willing to learn and make the most out of this incredible Experience! 😊
- ✓ Follow the registration process and meet the deadlines and requirements
- ✓ Submit proof of B2-C1 level of english:
  - ❑ Submit proof of B2-C1 level of english, either through **valid previously earned certificates** and/or **proof of having worked/studied** in anglo saxon countries
  - ❑ You can take esic language school level test (extra fees apply)

# CAMBRIDGE ASSESSMENT – LINGUASKILL

- FORMAT: online in ESIC or remote from your home
- 4 SKILLS: Speaking (15mins), Writing (45mins), Reading/Listening (85mins)
- PRICE: 110-150€\*
- WHERE? [www.esicidiomas.com](http://www.esicidiomas.com)
- WHEN? Mondays/Fridays: 3-6pm



Cambridge Assessment English

Linguaskill ▶▶

¿Qué es Linguaskill?

Online Bajo demanda

Reading/Listening Writing Speaking

Alineado al MCER

**A1-C1**  
o superior

The graphic features the Cambridge Assessment English logo at the top left and the Linguaskill logo at the top right. Below the title '¿Qué es Linguaskill?', there are three icons: a computer monitor representing 'Online Bajo demanda', a book and headphones representing 'Reading/Listening Writing Speaking', and a badge representing 'Alineado al MCER' with 'A1-C1 o superior' below it.

## FLEXIBLE:

TWICE A WEEK: MONDAYS (REMOTE) FRIDAYS ESIC MADRID

## FAST:

RESULTS IN 48HRS

## FAIR:

SECOND ATTEMPTS POSSIBLE TO INCREASE GLOBAL SCORE

## PRECISE:

CEFR GRADE FOR EVERY SKILL





## PAYMENT INFORMATION

# PAYMENT INFORMATION

Options at your disposal

## WIRE TRANSFER

Directly to esic bank account.

This is the best option for payments processed from spanish accounts.

## FLYWIRE

Through the link we will provide.

This is the best option for international payments.

## PLEASE KEEP IN MIND:

Once you have registered to one of the BSTs, you will receive further information regarding the payment, such as:

- Bank details & payment submission required information
- Flywire link

(!) Payments in cash or with credit/debit cards are not accepted



## INSURANCE POLICY

# INSURANCE POLICY

ADDITIONAL COST: 40€ p/p\*

\*Indicative Price & services, subject to insurance company


## MAPFRE SPAIN

### 1. PERSONAL ASSISTANCE COVERAGE

- \* SANITARY TRANSFER OR REPATRIATION, IN CASE OF ILLNESS OR ACCIDENT OF THE DISPLACED INSURED
- \* MEDICAL ASSISTANCE DUE TO ILLNESS OR ACCIDENT OF THE INSURED MOVED OUTSIDE THEIR COUNTRY OF USUAL RESIDENCE - OUTSIDE THE COUNTRY OF USUAL RESIDENCE OF THE INSURED (LIMIT 3000 EUROS.)
- \* MEDICAL ASSISTANCE FOR ILLNESS OR ACCIDENT OF THE INSURED DISPLACED WITHIN THEIR COUNTRY OF USUAL RESIDENCE - IN THE COUNTRY OF USUAL RESIDENCE OF THE INSURED (LIMIT 600 EUROS.)
- \* TRANSFER OR REPATRIATION OF THE DECEASED INSURED
- \* DISPLACEMENT OF THE COMPANION OF THE HOSPITALIZED INSURED - DUE TO HOSPITALIZATION OF THE INSURED OVER 5 DAYS - DUE TO THE DEATH OF THE INSURED
- \* ACCOMMODATION FOR THE COMPANION OF THE HOSPITALIZED INSURED - UP TO 42 EUROS/DAY - MAXIMUM 10 DAYS (LIMIT 420 EUROS.)
- \* EXTENSION OF THE INSURED'S STAY DUE TO ILLNESS OR ACCIDENT - UP TO 42 EUROS/DAY - MAXIMUM 10 DAYS (LIMIT 420 EUROS.)
- \* EARLY RETURN OF THE INSURED DUE TO THE DEATH OF A FAMILY MEMBER - UP TO THE SECOND DEGREE
- \* EARLY RETURN DUE TO SERIOUS ACCIDENT AT YOUR USUAL RESIDENCE OR PROFESSIONAL PREMISES
- \* TRANSMISSION OF URGENT MESSAGES

### 2. BAGGAGE COVERAGE

- \* COMPENSATION FOR DEFINITIVE LOSS, THEFT, OR EXTERIOR DAMAGE TO BAGGAGE CHECKED IN FLIGHT - CARRIER'S CERTIFICATE (LIMIT 600 EUROS.)
- \* INDEMNITY FOR DELAY OF BAGGAGE CHECKED IN FLIGHT (LIMIT 90 EUROS.)
- LOCATION AND SHIPPING OF LUGGAGE AND PERSONAL EFFECTS

A close-up photograph of a person's hands holding a white document. The document has the words "Terms and Conditions" printed on it in a black, sans-serif font. The document is slightly tilted. A teal graphic element, consisting of a horizontal bar at the top and a vertical bar on the right, partially obscures the document. The background is a solid blue color.

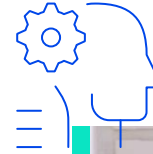
# Terms and Conditions

**TERMS & CONDITIONS**



# TERMS & CONDITIONS

- Attendance to the entire program is mandatory to obtain the certificate of completion
- Due to forc e majeure schedule, destination, pricing, availability, partner and overall conditions are subject to change
- The reservation of flights, transfers, or similar items not included in the ILC fee, is under students' management; nevertheless, we can put you in touch with an agency
- ESIC is not responsible for possible visa requirements or any other legal requirement to enter the country.
- **The minimum number of students for the program to take place is 15.** The inability to achieve this minimum may result in the cancellation of the program **or an increase in price to cover costs.**
- You must be able to prove at least a B2 level of English, for example: Valid previously earned certificates, esic languages level test, proof of having lived/worked in an anglo saxon country, ...
- Cancellation policy for students:
  - The student cancels after registration: **100% of the fee is charged to the student**
- Any additional cost related to COVID or similar, will be undertaken by the student
- Any additional cost related to the students' negligence, possible damages in any of the facilities attended during the course, or similar will be undertaken by the student





OTHER IMPORTANT  
INFORMATION

# OTHER IMPORTANT INFORMATION

## VISA REQUIREMENTS

### USA

Some nationalities (EU citizens, for example) can enter the country as tourists ([ESTA required](#)) and do not require a visa to take the one week course. Consult your requirements depending on your nationality. In the event you require a visa, then you can apply for a Tourism and Visit (B-2) Visa.

Your passport must be valid for at least six months beyond your period of stay in the United States.

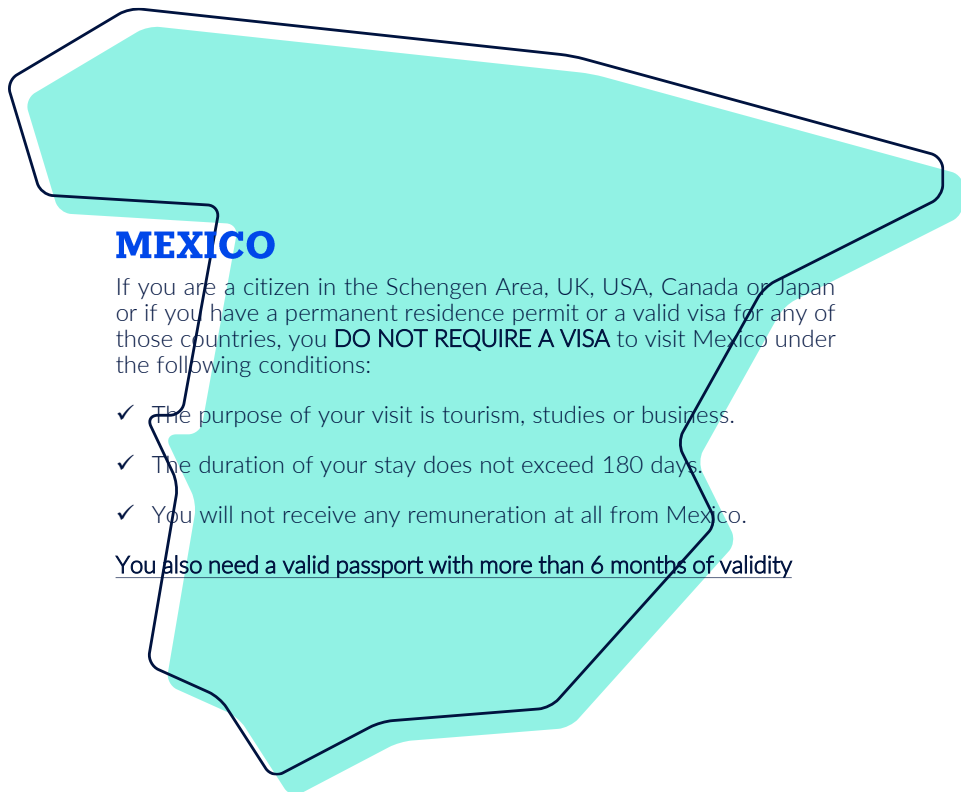
### ENGLAND

Some nationalities (EU citizens, for example) can enter the country as tourists and do not require a visa to take the one week course.

[Consult your requirements depending on your nationality.](#) In the event you require a visa, then you can apply for a Visitor Visa.

You also need a valid passport to enter the UK. It should be valid for the whole of your stay.

**If you do need a visa, please take into consideration the processing time which can vary from 30 to 90 (or more) days, depending on the country of issue.**



### MEXICO

If you are a citizen in the Schengen Area, UK, USA, Canada or Japan or if you have a permanent residence permit or a valid visa for any of those countries, you **DO NOT REQUIRE A VISA** to visit Mexico under the following conditions:

- ✓ The purpose of your visit is tourism, studies or business.
- ✓ The duration of your stay does not exceed 180 days.
- ✓ You will not receive any remuneration at all from Mexico.

You also need a valid passport with more than 6 months of validity



**DOUBTS?**

**CONTACT**

[study.tours@esic.edu](mailto:study.tours@esic.edu)

Hvala vam Fale.  
Dziękuję Ci Vielen Dank  
Merci Faleminderit Děkuji omadlobt  
Дзякуй **Thank you!** Merci Th  
ziękuję Ci  
uji Gracias omadlobt Dank je Дзя  
ськіуі Vielen Dank Grazie Dziękuję  
lobt Hvala vam Vielen D  
Děkuji Thank you Me

